

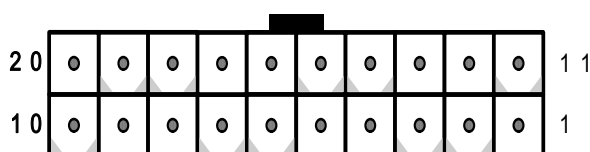
IP-8S-RS-R40

Nov. 27, 2007

8-Slot Backplane with 4 PCI and 3 ISA Bus User Manual Ver. 4.0

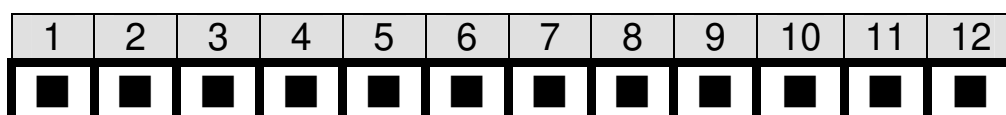
1. PW2: ATX Power Connector

Pin	Description	Pin	Description
1	+3.3Vdc	11	+3.3Vdc
2	+3.3Vdc	12	-12Vdc
3	GND	13	GND
4	+5Vdc	14	PS-ON
5	GND	15	GND
6	+5Vdc	16	GND
7	GND	17	GND
8	PWR-OK	18	-5Vdc
9	+5VSB	19	+5Vdc
10	+12Vdc	20	+5Vdc



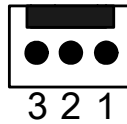
2. PW1: AT Power Connector

Pin	Description	Pin	Description
1	PWRGD	7	GND
2	+5V	8	GND
3	+12V	9	-5V
4	-12V	10	+5V
5	GND	11	+5V
6	GND	12	+5V



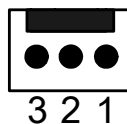
3. ATXCTL1: Backplane to Mainboard Connector

Pin	Description
1	GND
2	PSON#
3	5VSB



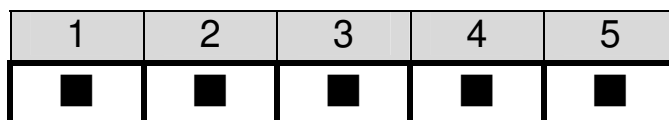
4. CN2, CN4: Fan Connector

Pin	Description
1	GND
2	+12V
3	NC



5. CN1: Voltage Connector

Pin	Description
1	+5V
2	-5V
3	-12V
4	+12V
5	GND

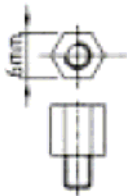


6. PCI routing table:

PCI ROUTING				
SIGNAL	PCI1	PCI2	PCI3	PC14
REQ#	REQ0#	REQ1#	REQ2#	REQ3#
GNT#	GNT0#	GNT1#	GNT2#	GNT3#
CLOCK	CLK0	CLK1	CLK2	CLK3
IDSEL	AD19	AD20	AD21	AD22
INTA#	A	D	C	B
INTB#	B	A	D	C
INTC#	C	B	A	D
INTD#	D	C	B	A

7. Notice:

- a. Recommend to use 6mm width spacer to install



- b. Torsion must less than 6lb-inch

8. Dimension:

