

# BPC-A440PE

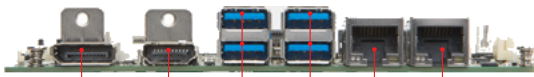
Fanless Embedded Box PC with Intel Apollo Lake-I Pentium N4200E CPU

Small, Low Voltage and Wide Temperature Light



## Features

- Intel Apollo Lake-I Pentium N4200E CPU
- Ultra Low Power and Fanless Design
- DP/ HDMI output supported
- Optional Wi-Fi Connection supported
- Rugged Design for Shock/Vibration Protection
- **Wall Mount**
- TPM 2.0 Header
- **Wide Temperature -20°C ~ 60°C**



DP/HDMI    HDMI/DP    4 x USB 3.0    2 x Gigabit LAN

## System

**CPU** Soldered onboard Intel Pentium®, Apollo Lake-I N4200E, 4Core, 2,5 GHz

**Memory** 1 x SO DDR3L SO-DIMM socket, supporting 1333/ 1600 MHz SDRAM up to 8GB  
pre-install 2GB/4GB DDR3L SO-DIMM Memory Module

**Graphics** Integrated Intel® HD 505 Grafics Chip

**LAN Chipset** Intel 2 x 210iT GBE controllers

**Watchdog Timer** 1~255 levels reset

## I/O

**Serial Port** only optional

**USB Port** 4 x USB 3.0 port  
2 x USB 2.0 ports

**LAN** **2 x RJ-45 ports for GbE**

**Video Port** 1 x DP female connector  
resolution 3840x2160 @ 60Hz

1 x HDMI port  
resolution 4096x2160 @ 24Hz  
resolution 3840x2160 @ 60Hz

**Audio** connector for Line-out

**Expansion Bus** 1 x mPCIe Mini-card socket, 1x mSATA

## Environmental

**Operating Temp.** -20 ~ 60°C, ( RAMs, SSD optional )

**Storage Temp.** -40 ~ 85°C (-40 ~ 185°F)

**Operating Humidity** 10 ~ 95% @ 60°C (non-condensing)

**Vibration** 3 Grms/5~500Hz/random operation

**Shock** Operating 40G (11ms), Non-operating 60G with mSATA

## Qualification

**Certification** Meet CE, FCC

**Warranty** 2 Years, Lifecycle at least 5 Years

## Power Requirement

**Power Input** DC 12V-24V input

**Power Consumption** 1.77A@12V (typical w/ N4200)

## Storage

**Storage** 1 x mSATA socket, Optional pre-install 240GB/120GB mSATA SSD

## Mechanical

**Construction** Alu Housing complete and with CPU Heat sink

**Weight** 0.6kg (1.32lb, Barebone)

**Dimensions (W x D x H)** 180 x 130 x 51,5 mm

## OS Support

Windows 7, 32-bit/64-bit and embedded  
Windows 8.1, 32-bit/64-bit and embedded  
Windows10 pro 64Bit, WIN 10 IOT Enterprise  
Linux: Ubuntu, Red Head Enterprise, Fedora Workstation

## Order Information

BPC-A440PE Box PC with Apollo lake Pentium N4200 CPU



Powered by **ASUS**

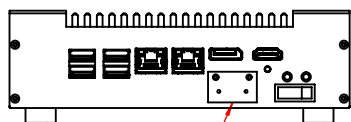
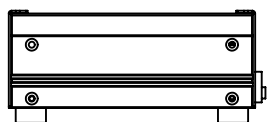
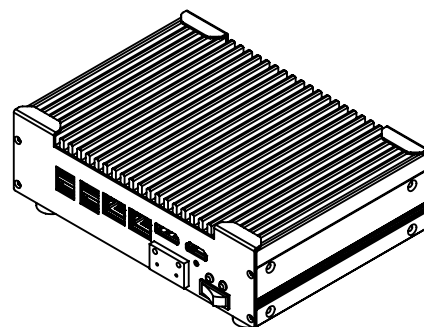
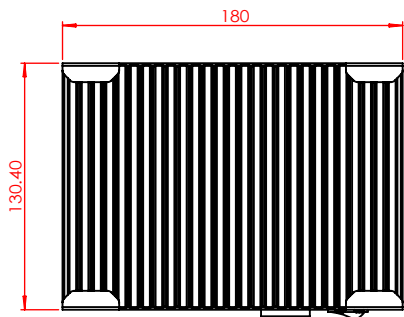
Alptech Elektronik GmbH



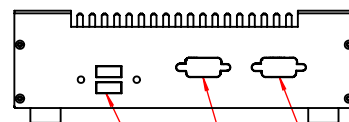
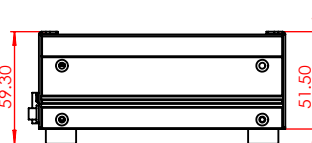
Zimmersmühlenweg 14-18  
D-61440 Oberursel/Ts.

Tel: 06171-9799110 E-Mail: info@alptech.de  
Fax: 06171-9799115 www.alptech.de

# Dimensions



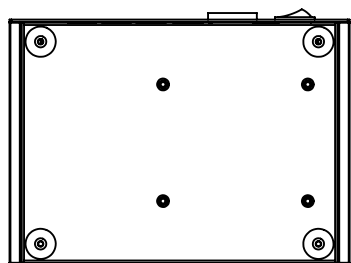
DC 9-36V



USB

COM

COM



## Standard Accessories

WMK-200 Wall-mount kit for BPC-200 Series

## Optional Accessories

120 GB SSD Intel® 2.5" 120GB SATAIII SSD kit



120 GB SSD Intel® mSATA 120GB SSD kit



MM-3CL-4G DDR3L-1333 4GB SDRAM



MM-3CL-8G DDR3L-1333 8GB SDRAM

WiFi-AT2200 Atheros AR9462 Wi-Fi module w/ 15cm internal wiring



ANT-D11 1 x Wi-Fi Dual-band 2.4G/5G antenna



DRK-200 Din rail mounting kit for BPC-200 Series

