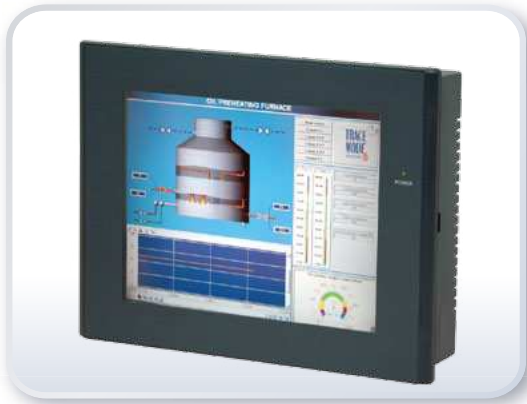


IP 65 Front Frame



Features



- 8" TFT-LCD backlight with resolution of 800x600
- Plastic housing
- Resistive touch screen
- Default VGA
- Optional for VGA, DVI , S-Video, Touch Screen
- DC 12 V power input (11-32V DC optional)



Specifications



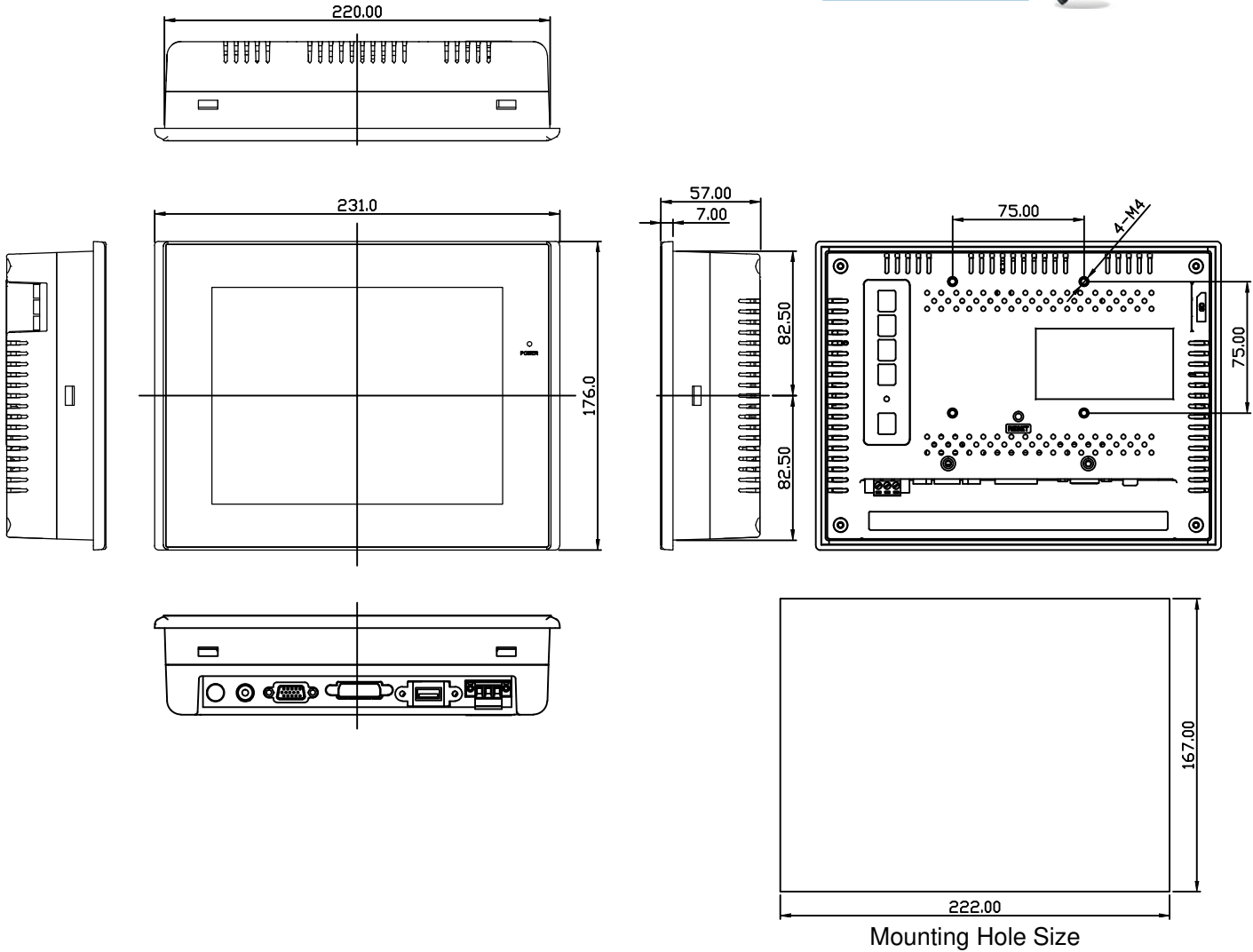
LCD	
Display Type	8" color TFT-LCD
Max. Resolution	800x600
Max. Colors	262K
Luminance (cd/m ²)	400
Viewing Angle	H:130° / V:110°
Backlight Lifetime	40,000hrs
System	
Input Signal	RGB
On Screen Display Control	On the back
External I/O Port	Default: <ul style="list-style-type: none"> • VGA Input • DC 12V input, 11-32V (optional) Optional: <ul style="list-style-type: none"> • DVI , S-Video Input
Power Supply	
Power Input	DC 12V
Touch Screen	
Type	Resister type (optional) USB / RS-232
Light Transmission	80%

Alptech Elektronik GmbH



ADP-08B

Dimension



Mechanical

Construction	Plastic housing
IP Rating	Front panel IP 65
Mounting	Panel / VESA 75x75 Mount
Dimension	231(W)x176(H)x57(D)mm
Net Weight	1.2 kgs

Environmental

Operating Temperature	0~50 °C
Storage Temperature	-20~60 °C
Storage Humidity	10~90% @40 °C, non-condensing
Certificate	Meet CE/FCC Class A

Ordering Information

ADP-08B	8" Color TFT industrial display monitor
---------	---